



Front Elevation



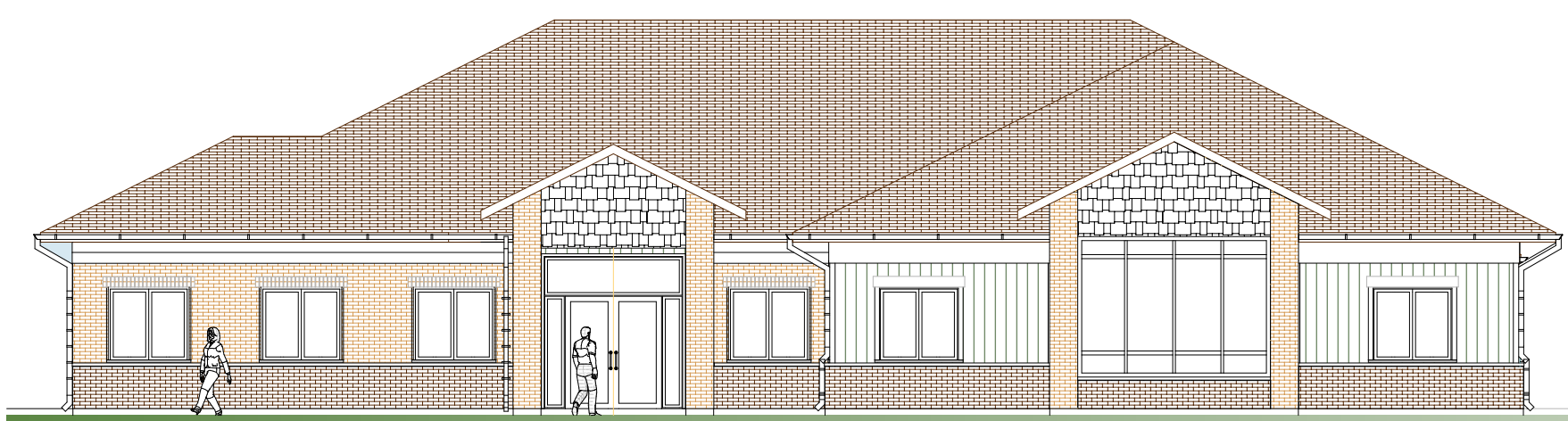
Sign & Building



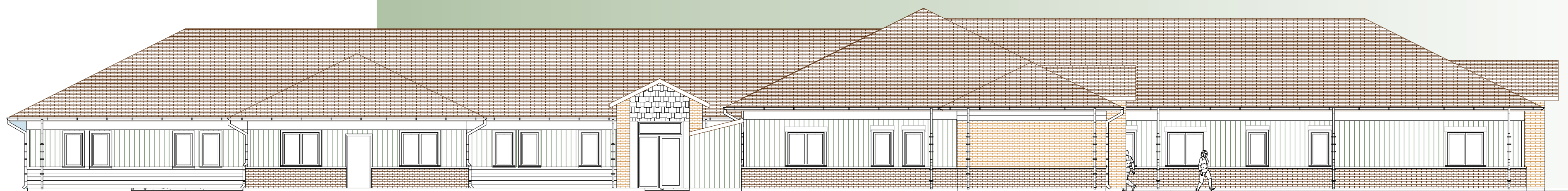
Main Entrance



Side Yard & Patio



South Elevation



West Elevation

Transition Living Pods
Experience has shown that a number of clients housed in the shelter and then assisted to find permanent housing, return to the shelter after a few months. They are unable to retain their housing due to a lack of the life skills necessary to be housed.

The housing program will enable clients to stay for a longer period (6-12 months) where the Staff will work with the clients to help teach those important life skills that may be lacking. Skills could include budgeting, being a good tenant, keeping a clean apartment, cooking & menu planning, laundry etc. Clients will be accommodated in a model reflecting independent living. A 'pod' (3-5 bedrooms sharing a bathroom, kitchen & living area) will enable individual privacy and communal sharing and learning of life skills.

Resource Room
This space acts as a lounge, a library resource, an internet access room to assist clients in looking for housing or employment and a meeting room for shelter staff leading learning sessions.

Accessible Transition Living Pod #1
A pod of Transitional Housing in the shelter area will allow for closer supervision and support of staff.

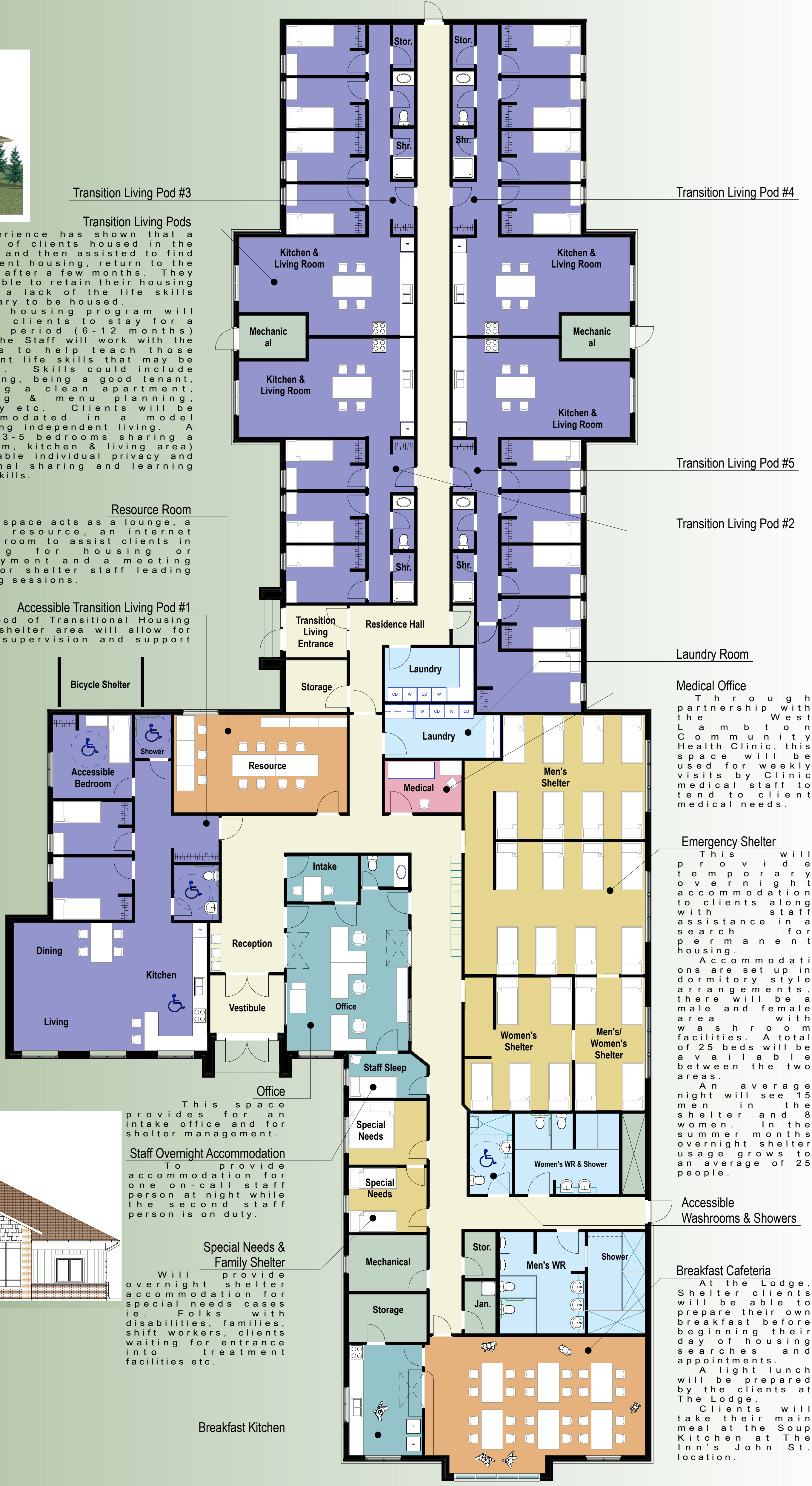
Office
This space provides for an intake office and for shelter management.

Staff Overnight Accommodation
To provide accommodation for one on-call staff person at night while the second staff person is on duty.

Special Needs & Family Shelter
Will provide overnight shelter accommodation for special needs cases i.e. Folks with disabilities, families, shift workers, clients waiting for entrance into treatment facilities etc.

Emergency Shelter
This will provide temporary overnight accommodation to clients along with assistance in a search for permanent housing. Accommodations are set up in dormitory style arrangements, there will be a male and female area with washroom facilities. A total of 25 beds will be available between the two areas. An average night will see 15 men in the shelter and 8 women. In the summer months overnight shelter usage grows to an average of 25 people.

Breakfast Cafeteria
At the Lodge, Shelter clients will be able to prepare their own breakfast before beginning their day of housing searches and appointments. A light lunch will be prepared by the clients at The Lodge. Clients will take their main meal at the Soup Kitchen at The Inn's John St. location.



D G A
DAVID GILCHRIST ARCHITECT

DAVID GILCHRIST, ARCHITECT
907 DEVINE ST. SARNIA, ON N7T 1X3
519-336-4880 T
519-336-6922 F
dwg@turtlewerks.com



DRAWING USE
This drawing including any patented or patentable features embodies confidential information of the Architect and the owner. Its use is conditioned upon the users agreement not to reproduce the drawing in whole or in part or the material described thereon or to use the drawings for any purpose other than specifically agreed to by the Architect and the facility owner.

PROJECT LOCATION
Confederation Street
Sarnia, Ontario, Canada
Tuesday, January 20, 2009

The Good Shepherd's Lodge

Floor Plan
Concept Design